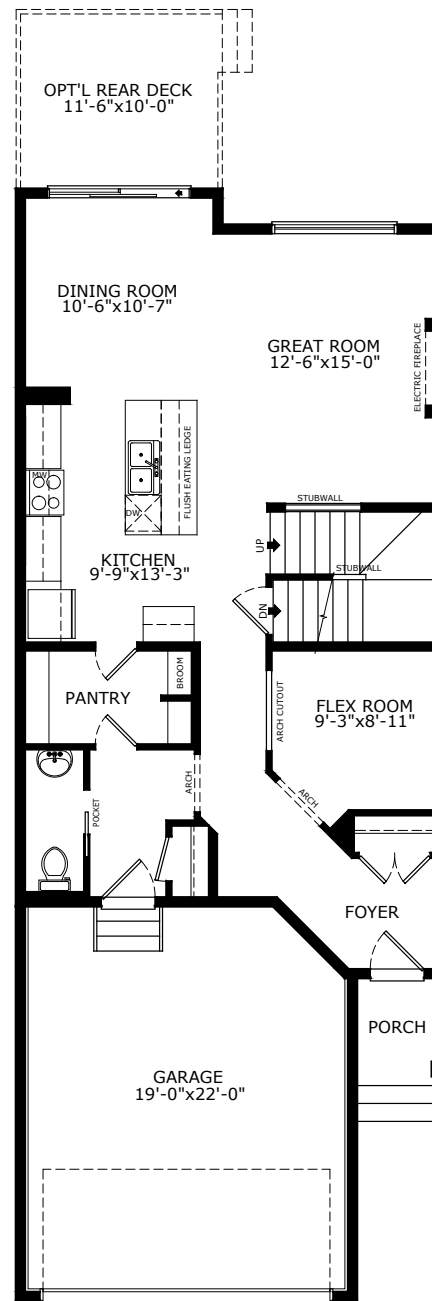
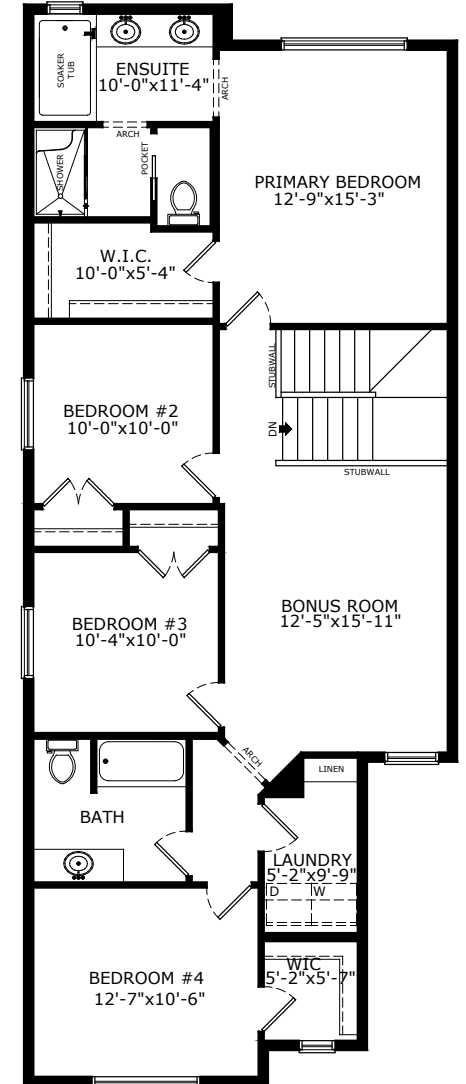


2217 SQ FT  
4 BEDS  
2.5 BATH

# DENALI 4



MAIN: 966 SQ FT



UPPER: 1251 SQ FT

# Sterling HOMES

A QUALICO Company

## ELEVATIONS



CONTEMPORARY ARTS & CRAFTS



CONTEMPORARY PRAIRIE



CRAFTSMAN



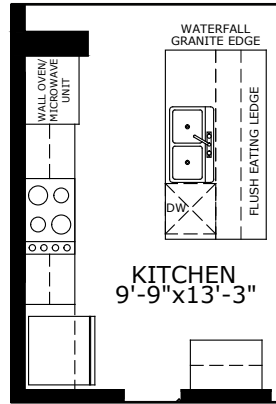
MODERN



PRAIRIE

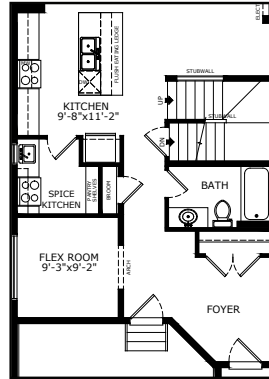
## MAIN FLOOR OPTIONS

EXECUTIVE KITCHEN

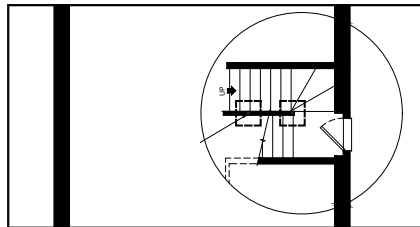


KITCHEN 9'-9" x 13'-3"

SPICE KITCHEN & FULL BATH

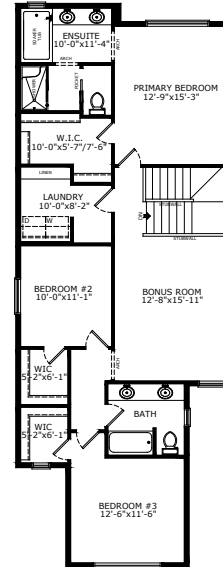


SIDE ENTRY WITH REVISED BASEMENT STAIRS

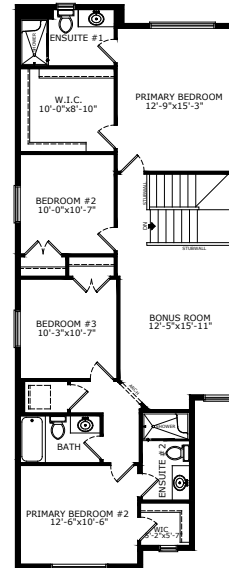


## UPPER FLOOR OPTIONS

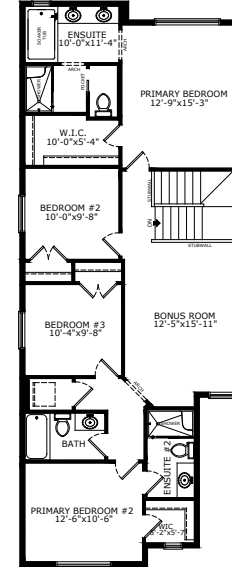
OPTIONAL 3RD BEDROOM



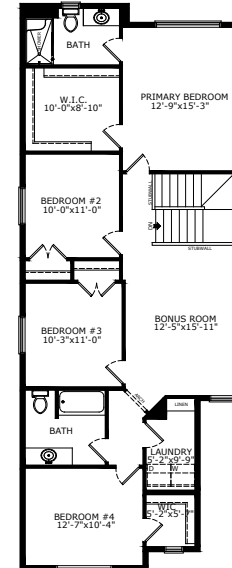
OPTIONAL ENSUITE AND PRIMARY BEDROOM #2



OPTIONAL 2ND PRIMARY BEDROOM

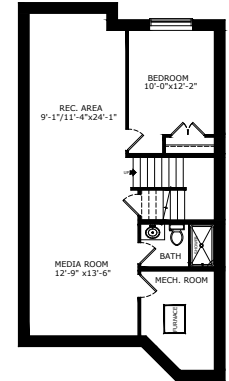


OPTIONAL ENSUITE

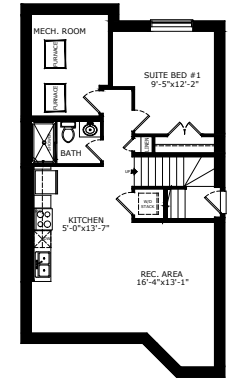


## BASEMENT OPTIONS

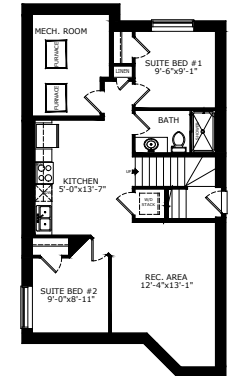
STANDARD 830 SQ FT



1 BEDROOM 'LEGAL SUITE' 704 SQ FT



2 BEDROOM 'LEGAL SUITE' 704 SQ FT



Scan here for floorplan options and more

\*Legal Suite availability varies by community and municipal regulations.

# Build Your Life

STERLINGCALGARY.COM